

SATCO®

SAT620FGS 20" FIXED GRAPPLE SAW

Weight:	1750kg	3858lb
Control System:	SATCO® Simple Control	
Holding Capacity:	0,55m ²	
Rotation:	Heavy duty continuous 12kNm	
Close Minimum:	15cm	6"
Open Maximum:	120cm	48"
Carrier size:	16-25 tonne	
Main Saw:	43" saw bar 3/4" chain 45cc saw motor Max cut - 76cm (30")	

The **SATCO®** 620FGS is a versatile saw head, its resume includes:

- Fall and bunch for ground based crews
- Fall and bunch for swing yarder grapples
- Windblown sites - safe for handling fallen or (hung up) stems
- Truck loading
- Woodlots
- Sorting and stacking stems
- Controlled felling of trees
- Quick hitch compatible
- Ideal for multi-stem bunch cutting



SATCO®
www.satco.co.nz

6-14 Satco Drive, PO Box 254
p. +64 (7) 886 4539

Tokoroa, New Zealand
e. admin@satco.co.nz

SATCO[®]

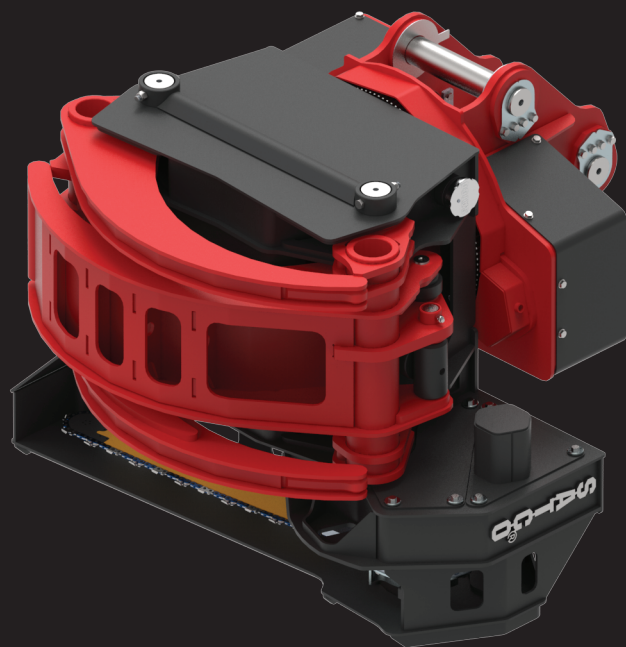
SAT620FGS FIXED FELLING HEAD



SAT620FGS

Key features include:

- 8cm (3") pins for strength and long life
- Extra "dead length" in cylinders for superior seal life
- Oil impregnated bushes for less wear
- Well protected hoses and valves with easy access for service
- Removable covers for easy servicing
- 360° continuous rotation
- Heavy duty saw and swing arm with 88° rotation
- Rotate Float mode



SATCO[®]
www.satco.co.nz

6-14 Satco Drive, PO Box 254
p. +64 (7) 886 4539

Tokoroa, New Zealand
e. admin@satco.co.nz