

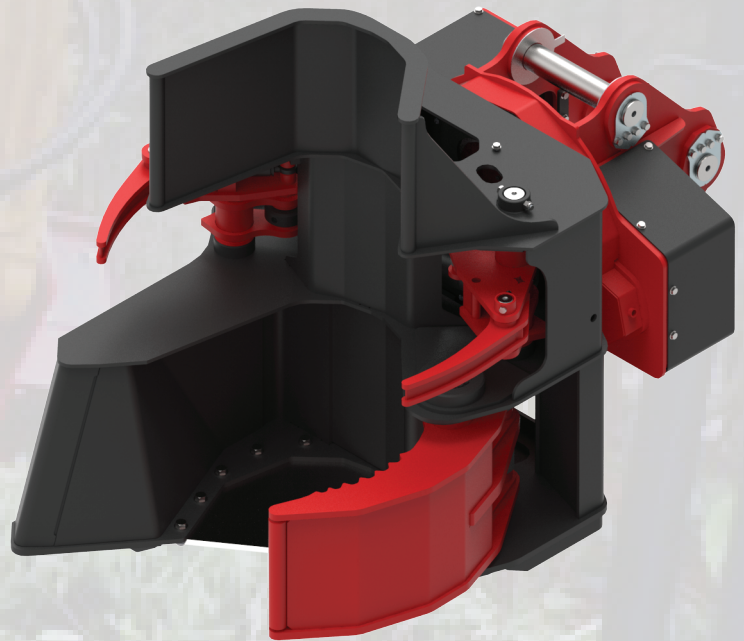
SATCO®

SAT12FSH ACCUMULATING SHEAR HEAD

Weight:	1800kg	3968lbs
Height:	154cm	60"
Rotation:	360° continuous	12kNm
Maximum open of arms:	66cm	26"
Max shear:	30cm	12"
Minimum close of accumulators:	8cm	3"
Stump height:	5.6cm	2.2"
Quantity of fixed knives:	1	
Carrier size:	16-24 tonne	
Accumulation Capacity:	1800cm ²	

The **SATCO**® 12FSH Shear Head resume includes:

- Fall and bunch for Eucalyptus and Pine extraction
- Accumulate stems while falling
- Quick hitch compatible



SATCO®
www.satco.co.nz

6-14 Satco Drive, PO Box 254
p. +64 (7) 886 4539

Tokoroa, New Zealand
e. admin@satco.co.nz

SATCO[®]

SAT12FSH ACCUMULATING SHEAR HEAD



SAT12FSH

Key features include:

- 8cm (3") shear pin for strength and long life
- Extra "dead length" in cylinders for superior seal life
- Oil impregnated bushes for less wear
- Well protected hoses and valves with easy access for service
- Removable covers for easy servicing
- 360° continuous rotation
- Rotate Float mode
- Multi-stem accumulation

SATCO[®]
www.satco.co.nz

6-14 Satco Drive, PO Box 254
p. +64 (7) 886 4539

Tokoroa, New Zealand
e. admin@satco.co.nz